



## PRODUCT CATALOGUE

FOR SPECIALIST DESIGN AND  
MANUFACTURE OF PACKAGING,  
FILLING AND INSPECTION SYSTEMS  
FROM FOOD PROCESSING THROUGH  
TO THE CHEMICAL INDUSTRY.



**With over 30 years experience  
our capabilities support various  
industries and manufacturing  
processes.**

Partnering with well known and trusted global brands. Azano offers a comprehensive range of technologically advanced equipment and integrated solutions. We offer equipment across a large range of industry sectors, often with specific customised needs.

## CONTENT

---

About Us .....	05
Bagging, Packaging and Filling.....	07
Inspection and Detection .....	17
Food Processing .....	25
General Weighing .....	33
Robotic Palletising .....	41
Pumping Solutions and Water Treatment.....	45
Dry Material Handling .....	51





# ABOUT US

**Established in 1989, AZANO is a solutions based Australian engineering company specialising in the design and manufacture of food processing, packaging, filling, water treatment, inspection systems, batching and chemical processing equipment.**

Our business approach and success has prided itself on customer-driven objectives. We have developed a wide range of material handling applications that eliminate today's barriers to cost saving efficiency and performance by delivering fast, reliable systems manufactured to Australian standards, while adhering to strict Quality Management Systems (QMS).

With over 30 years' experience our capabilities support many industry and manufacturing processes. Importantly, our customer's investments are protected by AZANO's strong relationship with its strategic partners that extend support options for trouble free operation under any conditions.

Sales, service, design and manufacturing centres throughout the Asia Pacific region provides customers with multifaceted support for all our equipment.

## OUR MAJOR CLIENTS

Ajinomoto  
Albemarle Lithium  
Asia Gold Rice Co Ltd  
Philips  
BASF  
Cargill  
Cheetham Salt  
Co-operative Bulk Handling (CBH)  
CSR  
DMV International  
Dulux Group  
Dupont  
Erbacher  
Flexicon Corporation  
GCP Applied Technologies  
Johnson & Johnson  
Kelloggs  
MasterFoods  
Meggie  
Mitsubishi Chemical  
MSP Engineering  
Nestle  
Ridley Corporation  
Rio Tinto  
Saputo Dairy Australia  
SCG CocoaLand  
Syngenta  
TPRC  
Unilever  
Van Hees  
Wagner Cement  
Wood Australia  
Worley





# BAGGING, PACKAGING + FILLING

- 
- Form, Fill and Seal
  - Semi Automatic Bagging Systems
  - Bulk Bagging, Filling and Unloading
  - Dry Material Feeders
  - Liquid Filling Systems



---

# FULLY AUTOMATIC PACKING FORM / FILL / SEAL

**Our goal is to supply highly efficient, cost effective solutions to create greater value for our customers.**

We specialise in offering unique packaging equipment designs that minimize the number of replaceable components. This means our customers will have less down time and replacement costs associated with traditional packaging designs.

Offering a range of form, fill and seal packaging solutions and applications to work with many types of products. The form, fill and seal technology is used in a variety of packaging configurations to best fit specific needs.

## COMPREHENSIVE PACKAGING SOLUTIONS

RethPack™ systems cover a range of packaging applications with both standard models and custom solutions that feature streamlined, high performance designs.

## FREE FLOW APPLICATIONS (Vertical configuration)

Our standard packaging system is best suited for food products, seeds and legumes, salt, soil, mulch, fertilizer, wood pellets and other non-compressible products.

## COMPRESSION APPLICATIONS (Horizontal or vertical configurations)

This type of packaging is ideal for wood shavings, insulation, and other soft products that can be compressed without compromising the quality of the product.





## FREE FLOW APPLICATIONS: VERTICAL CONFIGURATION

MODEL	SYSTEM FEED	PRODUCTS	BAG SIZE	PRODUCTION SPEED
<b>HC-2020 Horizontal Compression Bagger</b>	Controlled Screw	Ideal for wood shavings, cellulose insulation and other compressible products	Bag sizes up to 305 x 480 x 810 (mm)	7 bags per minute - Design Dependent
<b>VC-3030 Vertical Compression</b>	Flexible Feed Systems Available	Ideal for compressed products including wood shavings, peat moss and hydro mulch	Bag sizes up to 305 x 480 x 810 (mm)	Up to 5 bags per minute - Design Dependent
<b>VPR-4010 Specialised Mulch Bagging Machine</b>	Flexible Feed by Weight or Volume	Ideal for mulch, soil, and other products requiring light compression	1220mm wide roll of film	8 bags per minute - Design Dependent
<b>VFFS-5010</b>	Vertical Free Flow	Food products, seeds and legumes, salt, soil, mulch, fertilizer, wood pellets and other non-compressible products	1220mm wide roll of film	Up to 20 bags per minute (Dual Head)
<b>VFFS-5020</b>	Vertical Free Flow (Heavy and Light)	Food products, seeds and legumes, salt, soil, mulch, fertilizer, wood pellets and other non-compressible products	1220mm wide roll of film	Up to 20 bags per minute (Dual Head)
<b>BB-6010 Specialised Insulation Bagging Machine</b>	Manual or Automatic Loading	Designed exclusively for packaging of batts of insulation	Adjustable for multiple bag sizes	Design Dependent
<b>Volumetric Feeder</b>	Controlled Screw	Suitable for peat, bark nuggets, mulch and any product requiring continuous volumetric feed	Not Applicable	Application Dependent
<b>Bully Bagger</b>	Flexible Feed by Weight or Volume	Ideal for straw, hay, wood shavings and other compressible products	Pre-made bags up to 305 x 480 x 810 (mm)	3-4 bags per minute - Design Dependent



## HC-2020

The HC-2020 has proven to be a leader in compression packaging technology. It is a heavy duty horizontal compression bagger with a small number of moving parts and standard components making the system easy to operate and maintain. The sturdy construction means minimal downtime and maintenance which ensure a quicker return on investment.

### Key Features of the HC-2020 include:

- Two-way compression system for square, dense bails
- Patent Pending gusset technology that ensures tight gussets and flat ends
- Ideal for wood shavings, cellulose insulation and other compressible products
- Bag sizes up to 305 x 480 x 810 (mm)



## VC-3030

The VC-3030 is ideal for customers looking to bag wood shavings, peat moss and other compressible products. This design has a number of advantages: The small foot print saves space, and allows for easy placement in a manufacturing facility, fewer moving parts than multi-station baggers to increase reliability and the ability to package multiple bag sizes. Not only is the VC-3030 flexible on bag sizes, changing from one bag to another is simple. It takes 15 minutes to switch bag sizes - no tools necessary.

### Key Features:

- Easily change bag sizes in minutes
- Compression packaging with a much smaller footprint
- Optional form tube carousel to store tubes not in use
- Integrated pre-weigh option



## VPR-4010

Light compression bagger ideal for: mulch, soil and other products requiring slight compression.

Bag sizes accommodating up to 1220mm of film.

The VPR-4010 is a new design featuring an optional vertical pneumatic ram to apply light compression. Ideal for mulch, soil, and anything else requiring a slight amount of increased density but not requiring the compression ratio of the HC-2000 or VC-3000 series of baggers.

The VPR-4010 series bagger is easy to set up, operate and maintain while providing a quick return on investment - providing a one year payback.



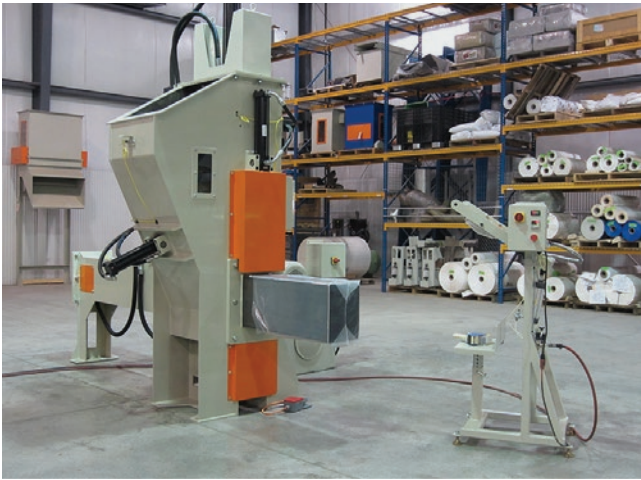
## VFFS-5010

Free flow bagger is ideal for: food products, soil and mulch, seeds, wood pellets, salt, fertilizer, and other free flowing (non-compressible) products.

Production speed: up to 20 bags per minute.

Bag sizes accommodating up to 1220mm of film.

The VFF-5010 is one of the best-selling vertical free-flow baggers. Ideal for a variety of products including raw food products, wood pellets, animal feed and much more. The VFF-5010 can include an optional mounted hopper to facilitate product in-feed into the machine. The design also includes an optional second pre-weigh for faster production. The VFF-5010 offers an outstanding combination of affordability and low cost operation with a quick return on investment for customers packaging free flowing products.



## BULLY BAGGER

The Bully Bagger is designed to work with pre-made bags. It is ideal for customers looking for a lower cost, yet robust and capable machine. Multiple closing options are available; time, photo eye (volumetric) or using pre-weigh head. The large chamber and simple operation is ideal for many products, such as wood shavings, straw and hay.

The machine is also available with form/fill/seal technology.



## VFFS-5020

Free flow bagger is ideal for: food products, soil and mulch, seeds, wood pellets, salt, fertilizer, and other free flowing (non-compressible) products.

Production speed: up to 20 bags per minute.

Bag sizes accommodating up to 1220mm of film.

The VFF-5020 is the most robust vertical free-flow design offered utilising two in-feed conveyors and two pre-weighs on a heavy duty frame. The VFF-5020 is ideal for customers looking to package heavy bags of free-flowing products on a frame that is built to last. It is designed to handle thicker films that are used for products such as salt and seeds. For customers looking to package seeds on the VFF-5020 they can be confident the film available provides both breathability and protection from unwanted insects.



## BB-6010

The BB-6010 bagger has been designed specifically for the packaging of insulation batts. It uses a continuous hot air seal to ensure quality back seal on each package. Vertically orientated end seals create a higher quality package that can be achieved with manual bagging. To manage larger film roll sizes, this machine handles C-fold film roll. The BB-6010 was also designed for flexibility – walls in the compression chamber are adjustable, as are wings on the compression rams to allow for different bag sizes.

### Key Features:

- Manual loading or integration into an automated system
- Designed exclusively for the packaging of insulation batts
- Quality seals ensure a higher quality package than manual bags
- Adjustable multiple bags



## VOLUMETRIC FEEDER

The development of this newly designed Volumetric Feed system is the most efficient in providing technologically innovative solutions. This means an easy-to-place, versatile solution for customers wanting to feed by volume.

### Key Features:

- Easy set up: Auger height is the only mechanical set up. A simple ruler system allows you to easily configure settings
- Shut off gate: A shutoff gate stops the flow of product off the conveyor
- Electronic controls: Electronic controls include a variable frequency drive on the augers and conveyor, an electronic break to stop the conveyor quickly, and various recipes that can be selected at the operator interface panel
- Levelling augers: The feeder uses simple augers instead of a levelling wheel, feed gates, or chains to gently lift product from the conveyor belt and provide extremely accurate and consistent feed rates



# SEMI AUTOMATIC BAGGING SYSTEMS



## CONTINUOUS DUMPING SYSTEMS (CDS)

Capacity: 5-150T per hour

Continuous Dumping Systems (CDS) are predominately used for the precise weighing and discharge of high volumes of raw material, specifically grains, sugar, rice etc prior to dispatch.

The systems provide users with important weighing data and consistency of discharge. Systems are customised to tonnage per hour requirements and come in either mild steel painted or stainless steel.



## SA SERIES

Ideal for: Rice, sugar, bread mix, beans and all other products with good flow characteristics

Bag weights: 250g - 10kg

Bags per hour: 500 - 800 depending on configuration and product

The SA weighing system offers cost effective semi automatic bagging solutions.

### Key Features:

- Available in either single or dual head weighing configurations
- Multi feeder capability – gravity, belt, screw or vibration
- Manufactured in mild steel/painted or stainless steel
- Compact, customised design saves space for tight installation areas



## SB SERIES

Ideal for: Food products, grains, pellets, beans, sugar, starch and other granular products with good fluidity

Bag weights: 20 - 50kg

Bags per hour: 500 - 1000 depending on configuration and product

The SB weighing system offers cost effective semi automatic bagging solutions.

### Key Features:

- Available in either single or dual weighing configurations
- Multi feeder capability – gravity, belt, screw or vibration
- Manufactured in mild steel/painted or stainless steel
- Compact, customised design saves space for tight installation areas

### Options Include:

- Palletising and Conveyor systems
- Bag Closing units
- Gantry
- Multi Feeder



## SC SERIES

Ideal for: Grains, pellets, salt, rice and any product with good fluidity

Weighing Method: Gross Weight

Bag weights: 20 - 50kg

Bags per min: 5 - 7bpm

The SC bagging system is a precise weighing unit suitable for weight ranges between 20 - 25kg. The system is operator friendly and designed to provide users with a simple semi automatic bagging function suitable for most raw materials with all types of feeder systems.

---

# BULK BAG FILLING AND UNLOADING

**Azano manufactures a wide variety of mild steel or stainless steel JB1000 and JB2000 bulk bag filling stations. The designs allow for accurate gross weighing and are ideal for bulk bagging of raw material with good fluidity.**

Compact designs can be customised to allow customers to implement bulk bag production into their operation without the need for major infrastructure upgrades or too much space being made available.



## BULK BAG FILLING JB SERIES

Ideal for: Grains, powders, sugar, pellets and other granular products

Bag weights: 500 - 2000kgs

Bags per hour: 15 - 20 (gravity feed)

### Options Include:

- Vibrating weighing platform for products that require compacting during the filling process
- Metal detection
- Automatic bag clamp
- Conveyor systems
- Customised gantries
- Multi Feeder options
- Air inflation
- Dust extraction



## BULK BAG UNLOADERS

The range of Bulk Bag Unloaders are Australian designed to handle all bulk handling requirements. They are available in single bag or duty standby configuration. Available in mild steel or stainless steel construction.

### Options Include:

- Monorail, electric hoist and motorised trolley
- Forklift loading with automatic bag tensioning device
- 4 x automatic bag massaging plates, for hard to feed products
- Bag neck closure device to retie partially open bags
- Mechanical and vibrator agitators
- Dust extraction
- Custom designed to suit specific space restrictions

---

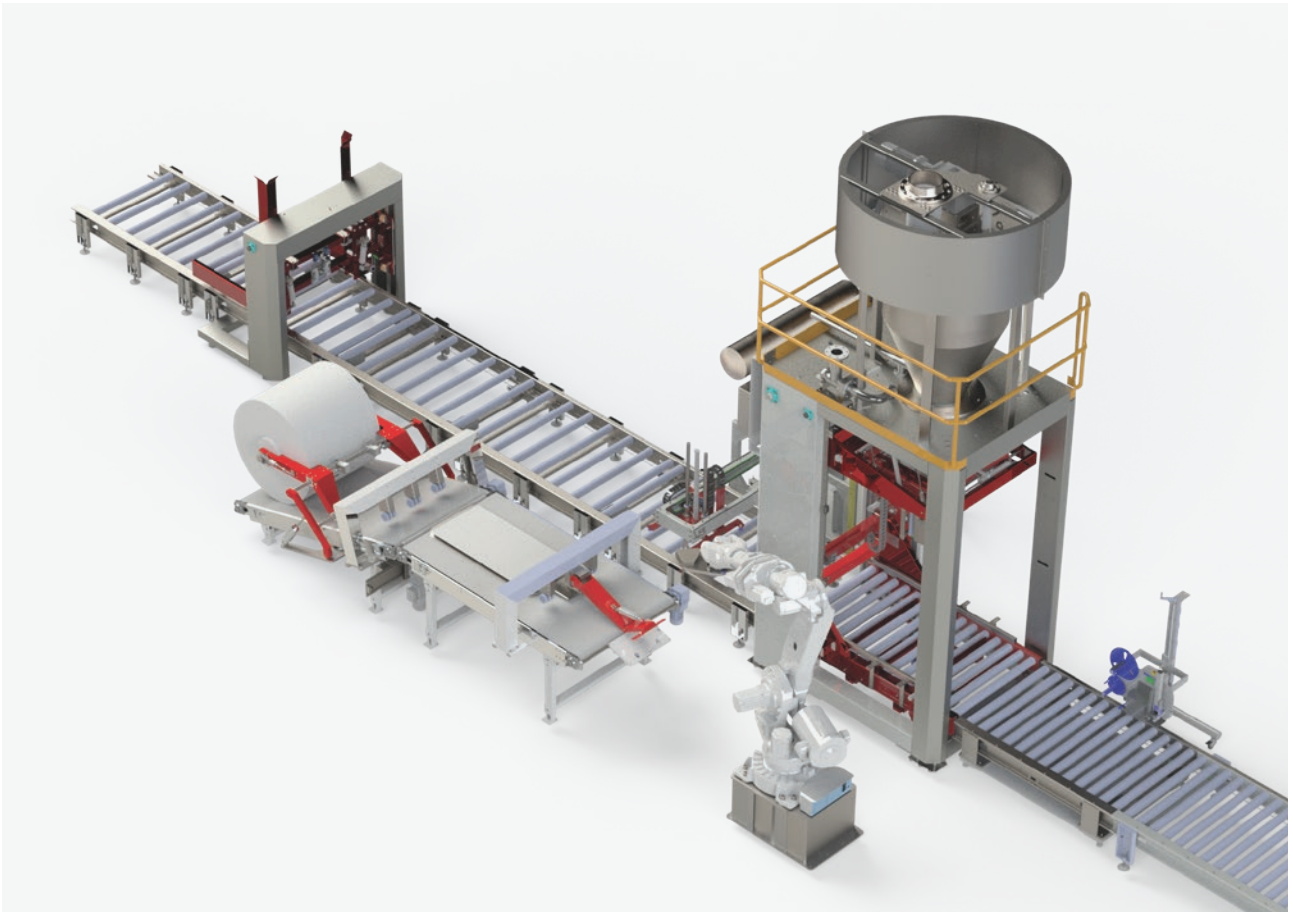
# FULLY AUTOMATIC BULK BAGGING SYSTEMS

**The fully automatic bulk bag filling station consists of an automatic bulk bag machine and robot for placing the empty bulk bag on the filling spout.**

The filling can accommodate different possibilities of dosing.

Can be equipped with either gross weighing system for difficult products, or net weighing for free flowing products.

The machines provide a wide range of possibilities: different filling spouts, system for blowing up the bag prior to filling, elevators for adjusting filling heights, welding and other closing systems, vibrators and more.





---

# LIQUID FILLING SYSTEMS

**Specialised liquid filling systems are capable of handling a vast range of fluids and designed with simplicity of operation and safety in mind. Filling can be achieved through either volumetric or gravimetric methods and determined based on product/fluid characteristics as well as container volume.**



Volumetric filling machines are based on a self-priming cylinder. A piston is moving inside this cylinder and the stroke length and diameter of the piston determines the filling volume.

Gravimetric filling machines are weighing the exact weight using a valve that is placed over an electronic scale. The scale, in combination with the weighing program, controls the valve operation.

Which method you should use depends on different factors:

Product properties - For example, if the product contains air bubbles, volumetric filling is not recommended.

Desired volumes - For volumes above 20 litres, we recommend a gravimetric solution.

Gravimetric solutions often require a greater investment than the volumetric system.

## Filling Styles

- Bottom up filling for fluids subject to foaming
- Top filling for large drums/IBC filling of most fluids

## Filling Capacity

- 2 - 1,000L

## Options

- Mobile systems
- Automated conveyors
- Pallet dispensers
- Explosion proof construction
- Remote controls
- Stainless steel pumps



# INSPECTION + DETECTION

- 
- Metal Detection
  - X-ray
  - Checkweigh



# METAL DETECTION

**The range of Cassel industrial grade Metal Detectors, X-Ray machines and Checkweigh systems we offer, provide the latest in German digital technology ensuring extreme equipment sensitivity, stability and reliability.**

Conforming to HACCP and GMP standards, the Cassel range of standard and purpose built inspection and detection applications can be used at various critical check points in many industrial processes, particularly food production where great demands are made on product quality and sanitation.



## SHARK 2A CONTROLLER

The SHARK 2A Controller sets a new industry benchmark for performance, user friendliness and document preparation. Cassel's exclusive Four Quadrant technology allows for 360° freestyle reach area around the product effect, significantly increasing sensitivity.

### Key Features:

- Auto calibration
- Auto product effect compensation
- Digital frequency and balance control
- No electronic maintenance
- HACCP and IFS compliance
- Compatible Windows software
- Stainless steel enclosures



## BD (For conveyor)

BD Metal Detectors, typically integrated onto conveyor belts with readily adjustable settings to ensure extreme equipment sensitivity, stability and reliability. A variety of reject mechanisms (pusher, belt stop and alarm) are available to alert operators to a find or to divert contaminated product. The conveyor belt, framing and controls are available in sanitary design for food grade process applications.

## SHARKNET® 2 SOFTWARE

Automatic documentation of operational data for metal detectors, check weigher and x-ray.

The SHARKNET®-2 Software networks all METAL SHARK® metal detectors, check weigher and x-ray with one Windows based PC. SHARKNET®-2 simplifies reporting for HACCP, GMP, BRC and IFS compliance. The software collects all the required data and prints out any user defined report requests.

Report functions supplied in Windows format for easy Printing of: IFS/HACCP/GMP/BRC reports, parameter sheet, graphic and text report of metal events with metal detectors. Batch and average weight reports with check weighers.

### Key Features:

- SHARKNET®-2 Software simplifies data documentation and SAVES customers money
- IFS / HACCP / GMP reports: Proves accurate and correct operation
- Batch and average weight reports
- Automated network printing and pdf-file creation
- Full remote control access / maintenance (METAL SHARK® - 2/2A only)



### IN-LIQUID (Pipeline)

Cassel's IN-LIQUID Metal Detector designed for liquids and slurries, boasts a rugged stainless steel sensor and housing, and is appropriate for use in the food industry. Suitable for ice cream, yoghurt and dairy products.



### GF (Downpipe)

Gravity Feed (GF) Metal Detectors are available in both standard and compact models. Used in gravity feed pipelines to monitor unwanted metal contaminants in continuous flowing granules or powders, such as sugar, flour, corn meal and spices. As bulk material flows through the metal detector, reject flaps promptly separate even the smallest metal contaminants from the product stream. Maintenance free design and high quality construction ensure reliable operation in the most challenging industrial environments. Pipe diameters are available from 3" - 24". Atex Zone 21 and 22 versions are available.



### IN-MEAT (For meat pumps)

Compact metal detector for sausage pumps and stuffer machines. Mobile base frame, stand with integrated gas spring for easy height adjustment 850 - 1200 mm (33.5 - 47.2"), for installation between stuffer and clip machine. Includes connection cable with external device plug and socket. Please advise type of stuffer machine upon ordering.

Available types for: Handtmann, Vemag, Rex, Risco, Velati, KandG, Frey, Karl Schnell. Special type IN-MEAT available for installation with linking gear box and twisting device for Handtmann and Rex.

# METAL DETECTION



**SHARK® R**  
(Ultrahigh sensitivity)

Typically SHARK® R applications are used in the medical/pharmaceutical sector as well as sanitary items, foods and chemical powders. The product falls through the R sensor head and an optional reject unit. With the SG reject unit even the smallest metal objects are separated out of the goods stream.

A SG Reject Device for R Sensor Head ensures metal particles are rejected automatically. The SG reject unit is suitable for pipe diameter of 35mm only. Max. flow rate 600 litres per hour (depending on product density and separation timing).

Ultra high sensitivity  
R0015 (15mm Ø) = Fe 0.10 / NFe 0.25 / SS 0.30mm sphere  
R0025 (25mm Ø) = Fe 0.15 / NFe 0.30 / SS 0.35mm sphere

R0035 (35mm Ø) = Fe 0.20 / NFe 0.35 / SS 0.40mm sphere  
R0050 (50mm Ø) = Fe 0.25 / NFe 0.40 / SS 0.50mm sphere



**PH**  
(For pharma)

Typically, the METAL SHARK® PH types are used at the outlet of a tablet press and provide the highest performance in detecting magnetic and non-magnetic metals. The tablets fall through the metal detector. With the reject flap, small metal objects are immediately separated out of the goods stream. Maintenance free design and high quality construction offers reliable operation in the most challenging industrial environments.



**TU**  
(Dividable tunnel)

TU types are used in plastic recycling, rubber production, wood and paper processing and food related industries. The TU type has a dividable sensor head. Installation into an existing conveyor is simple as the belt needs no cut. The aperture height can be changed. TU automatically calibrates changes in the sensor head geometry.





## RECT

Whole log metal detector with rectangle aperture for chipper protection.

The SHARK® RECT is made for the rough industrial applications at the wood yard; ideal for big products, such as wood logs or paper bales. The installation is typically in a U-trough shaped conveyor with flat belt, as well as in specially prepared vibration conveyors. The SHARK® RECT is available with aperture width 800 - 4500mm (2.6 - 14.8ft) and heights of up to 2000mm (4.6ft). Extended temperature range available -40° - +40° C.



## OCTA

Whole log metal detector with octagonal aperture for saw mills.

The SHARK® OCTA is made for the rough industrial applications at saw mills and forestry. Ideal for big products such as wood logs. The installation is typically in a half pipe or U-shaped conveyor. The SHARK® OCTA is available with aperture diameter 1300 - 1800mm (51.2 to 70.9").



## FL

(Flat plate)

Typically the FL type sensor heads are used in fleece, textile and foil production and provide the highest performance in detecting magnetic (ferrous) and non-magnetic (non-ferrous) metals.

The design allows for easy installation into existing conveyor lines or new installations.

Sensing width: 200 - 4,000mm

Best sensitivity: 0.8 @ 10mm above sensor

Conveyor speeds: 25 - 4,000mm/sec

# X-RAY

The XRAY SHARK® by Cassel is an X-ray device with an integrated conveyor belt. It automatically inspects packaged, not packaged or bulk products. It detects contaminants, as well as other optional individual attributes like completeness, form, and mass of the product. It classifies and sorts out faulty products automatically.

Conforming to HACCP and GMP standards, the Cassel range of standard and purpose built inspection and detection applications can be used at various critical check points in many industrial processes, particularly food production where great demands are made on product quality and sanitation.



## G10

The G10 is particularly suitable for smaller, packaged food or non-food products. For example in jars, boxes, plastic packaging and even metal foils or metal cans. Undesirable contaminants such as metal, stone, ceramic, glass or plastic with high density can be detected in the product. The G10 is the most compact X-ray device and therefore highly recommended as an entry-level detection system, suitable for packages sizes from 160mm (W) x 125mm (H) up to 256mm (W) x 25mm (H).



## G20 BULKFLOW

The product flows continuously down the conveyor or pipeline. The system scans continuously and captures frame by frame images. These frames are then analysed, and the reject signal transferred to the output, depending where the contaminant is in the image frame. It is possible to have a series of rejects on a bulkflow systems – for example you can have a drop-flap reject mechanism with 4 or 8 reject flaps.



## G40/80

The XRAY SHARK® G40 and G80 are the third generation of X-ray systems using the latest high sensitivity linear sensors. The combination of low energy inspection technology, up-to-the minute hardware and high performance image processing software provide a clear advantage for the optimal protection of your product.



## G50 X-RAY SCANNER (Glass-in-glass detection)

Cassel's development of a dual-beam X-ray scanner for glass-in-glass detection of contaminants provides a detection system with reliability and sensitivity via a series of computer-controlled high energy generators which work in tandem with a high-performance computer image analysis system. As well as providing the benefits of a traditional X-ray scanner, the glass-in-glass X-ray even detects glass and other contaminants in the top and bottom sections of glass containers.



## XPB SCANNER

The XPB scanner is an X-ray device that has been specifically designed to be integrated into an existing production line in the manufacture of transformer paperboards. Maximum product size can be 3400mm @ height 0-30mm or 3200mm @ height 30-100mm. The system has a pre-set memory for up to 100 products. Optional belt or roller conveyors are available.

# CHECKWEIGH

The check weigh systems available are automated machines for checking the weight of packaged products. The weighing is a dynamic, in-motion process. It is used to ensure that the weight of a pack is within specified limits. An optional reject system takes any packs that are outside the tolerance out of line automatically. Full BRC specification available.

## Key Features:

- High speed combined with high accuracy
- Reliable check weigh system for 24h use
- Designed for ease of use with minimum maintenance required
- Brushless DC motors
- Food Grade Design and Construction (up to IP 67)
- Mild Steel or Stainless Steel Fabrication
- Various Reject style - Air Blast / Single or Dual Flipper Arm / Pusher / Drop Arm
- Metal Detection / Label Applicator options available
- Networking capability and communications
- MID homologation, CE certification
- e-label software tu1/tu2



## TK C20 SERIES

The C20 Series is an entry level unit built for simpler applications where statistics and more advanced functions are not necessary.

The precision engineered C20 weigh platform guarantees weight stability, accuracy and repeatability.

The C20 comes with an easy-to-use display with settings for nominal weight, over and under-weight with adaptable belt sizes with applications from big bags of seed to small boxes of candy.



## TK C80 SERIES

The C80 Series is a PC based Windows XP in line check weigher featuring a high specification 15" touch screen display for ease of use and maximum operator flexibility. Designed and manufactured to the highest engineering standard with inherent reliability and longevity for use in tough, hostile environments. Available fabricated in stainless steel, IP66 with conveyors is driven by virtually maintenance free brushless DC motors. Up to four parallel weighing systems can be controlled by one display and software programme.



## TK C60 SERIES AND COMBI UNIT

The C60 Series is computer based and features advanced electronics and new, customisable software. The system uses a high contrast, 15" VGA colour screen easily displaying information on each article being processed. Product changes and alterations in product details can be made quickly and easily with a minimum of downtime. The function keys are integrated on the display which eliminates the need of an external keyboard.



## WS SERIES W355 - 375

The WS Series is a cost effective unit suitable for a range of food grade and industrial applications. The weighing system has a range of options from ticket printer to metal detector integration, which allows customers to have full control over their quality assurance. Weight range 6 - 60kg Dynamic accuracy  $\pm 3 - 40\text{gr}$  Standards CE Conform Europe, e law average software with tu1/tu2 limits User Interface 5.7" screen display, keypad. Power supply 230V / 1ph / 50-60Hz / 500Watt.







# FOOD PROCESSING

- 
- Food Processing Equipment
  - Industrial Washing Machines
  - Conveyor Lines
  - Retail Container Filling  
and Packaging

---

**Our range of food processing equipment is carefully designed and manufactured to GMP and HACCP processing guidelines as they apply to food hygiene and sanitation. We work with customers to determine the most effective application for every situation with a strong emphasis on simple designs that are robust, easy to clean and low maintenance, improving processing efficiency and productivity.**



#### **CUSTOMISATION**

All food processing equipment and applications are manufactured based on our customer-driven approach and can be engineered to specific customer requirements.

#### **OPTIMISATION**

The advanced optimisation capabilities inherent in all Azano processing systems ensure maximum performance.

This guarantees excellence in control and operational effectiveness over the life cycle of the equipment.

#### **HYGIENE AND SANITATION**

Food processing places stringent demands on sanitation and hygiene standards.

Azano's approach to excellence in design and manufacture ensures GMP and HACCP standards are consistently met or exceeded.





## SEAFOOD

- X-ray and metal detection
- Prawn/fish grading and weighing equipment
- Pack-off stations and transfer conveyors
- Crate, tote and bin washers
- Fish washers
- Cleaning, filleting and scaling solutions
- De-heading/peeling process conveyor
- Automatic chemical soaking systems
- Layering conveyor for cooking trays
- Steam and hot water cooker/cooling conveyor
- Vacuum transferring system for head and shell of prawns
- Crate and bin dumpers
- Steam exhausters
- Steam box
- Tray washers
- Sardine cutting machine

## POULTRY, MEATS AND DAIRY

- Crate, tote and bin washer
- X-ray and metal detection
- Steamers
- Heat and chill tunnels
- Pack-off stations and transfer conveyors
- Vacuum tumblers
- Powder mixers
- Screw chillers
- Battering machines
- Cut up lines
- Egg washers

## FRUIT AND VEGETABLE

- Processing lines
- X-ray and metal detection
- Blancher coolers
- Industrial washing machines
- Trimming line
- Screw blancher
- Hot water cookers
- Rubbish watering separator
- Transportation lines
- Weighing and grading machines

---

# INDUSTRIAL WASHING SYSTEMS

**Food processing places stringent demands on sanitation and hygiene standards. Azano's approach to industrial crate and tote washer manufacture is based on GMP and HACCP processing guidelines.**

We work with customers to determine the most effective application for every situation with a strong emphasis on simple designs that are robust, easy to clean and low maintenance, improving your processing efficiency and productivity.

Suitable for crates, totes and bins  
Azano's industrial washer machines cover all crate types and required capacities with each washer having multiphase washing cycles. These cycles are dependent on the amount of grime, dirt or soil to be removed and level of hygiene/sanitation required.

Designed for continuous spray cleaning, each machine has various points of difference such as resident time, temperature, water pressure, water quantity and chemical dosing. Features such as multilayer strainer systems guarantees a longer pump life time and maintains steady pressure. The recycling of water combined with separation of pollution, effectively reduces water and energy consumption without compromising the result.





		ECO WASH-1Z-1S(1H)	ECO WASH-2Z-2S(2H)	ECO WASH-3Z-2S(2H)
Capacity (Crates l hr.)		500 - 2000 pcs/hr		
Crate Size	Width(mm)	250 - 535		
	Height (mm)	100 - 350		
Pre Washing Zone (PW)				YES
Main Washing Zone (MW)		YES	YES	YES
Final Rinse Zone (FR)			YES	YES
Pump		Stainless Steel Pump		
Nozzles		Stainless Steel Nozzle		
Pipe and Connection		Stainless Steel Pipe and Pipe Header		
Pressure Gauges		YES		
Tank Volume (Each Washing Zone)		170 ltrs/each Zone		
Drain Doors and Ball Valves		Every Washing Zone		
Filter System		Double Layer Perforated Tray (In Water Tank)		
Filter Option		Static Screener (Extra Cost)		
Automatic Water Filling System		YES		
Pump Protection System		YES		
Structure		Made From Stainless Steel		
Conveyor System		Stainless Steel Dual Push Chain with Adjustable Speed by Inverter		
Side Guard		Manual Adjustable		
Upper Guard		Manual Adjustable		
Top Service Cover		Every Washing Zone		
Exhaust Hood and Valves		2 Exhaust Hoods and Butterfly Valve at In-feed and Out-feed Tunnel Side		
Control Panel		Stainless Steel with Start/Stop and Emergency Buttons Located at In-feeding Tunnel Side		
		PLC and HMI (touch screen) Option (Extra Cost)		
Temperature Setting		Digital Number Temperature Setting Point (Up to 68 °c)		
Emergency Button		Special Emergency Stop at Out-feed Tunnel Side		
Power Supply		3 x 380volts, 50 Hz. + N +G		
Consumption Connector Size		Fresh Water 1-1/4" BSP, Drain Valve 1-1/2" BSP, Steam 1-1/2" SSP		
CONSUMPTION TABLE for STEAM HEATING TYPE and ELECTRIC HEATER TYPE				
Steam Requirement	Zone 1	YES	YES	
	Zone 2		YES	YES
	Zone 3			YES
Steam Consumption@2 Bars (kg/hr)		70 - 80		
Approx Water Consumption		Approx 200 - 400ltrs/hr depending on dirt and water drop after wash		
Total Power Consumption of Pump and Geared Motor (KW)		7.87	13.37	18.87
Electric Heater	Zone 1	YES	YES	YES
	Zone 2		YES	YES
	Zone 3			YES
Electric Heater	Zone 1	4 x 6000w.	Option for 4 x 60011w.	
	Zone 2		4 x 6000w.	4 x 4500w.
	Zone 3			4 x 6000w.
Total Power of Pumps - Motor - Heater(KW.) Heat Up Time- 30 - 40min		31.87	55.37	60.87
PUMP	Zone 1	7.5	7.5	7.5
	Zone 2		5.5	5.5
	Zone 3			5.5
Overall Dimension (W x L x H) mm		1260 x 3200 x 1602	1260 x 4700 x 1602	1260 x 6200 x 1602
Maximum Height (mm)		1903		

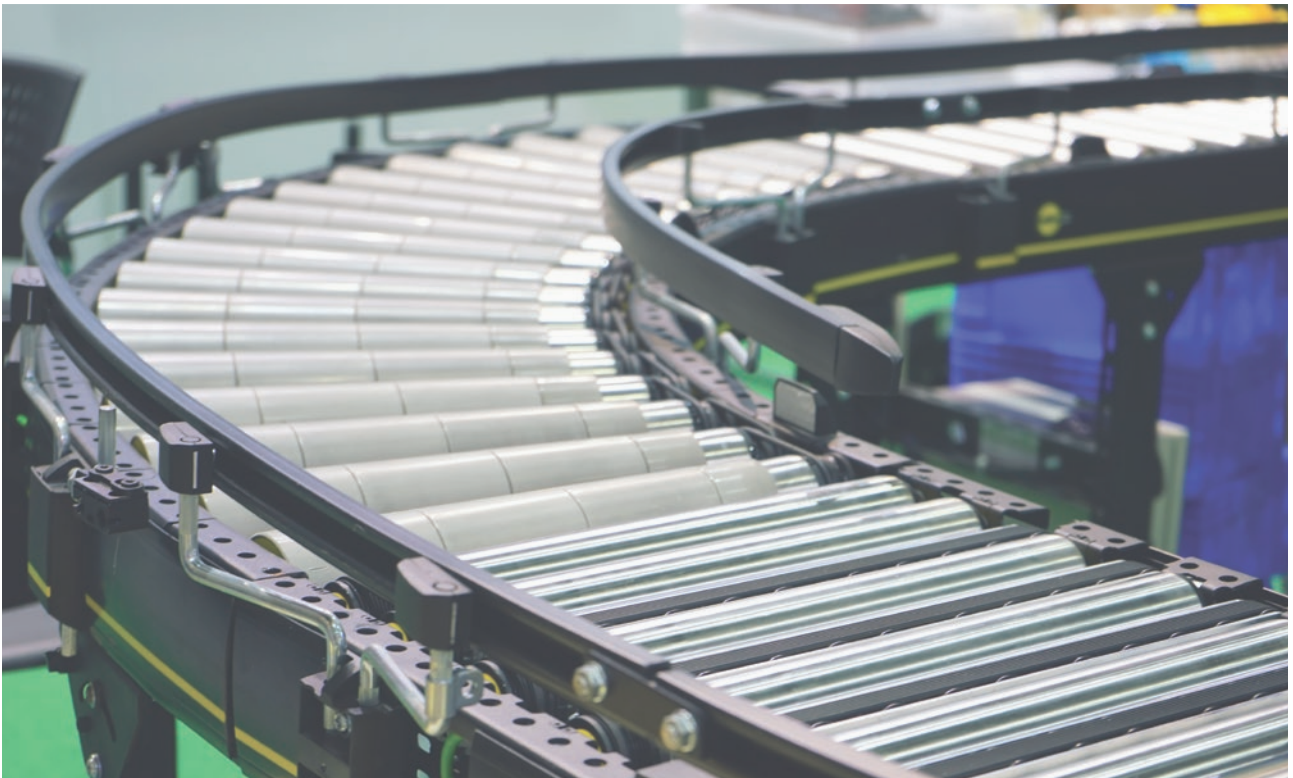
---

# CONVEYOR SYSTEMS

**Belt Conveyors suit the movement of goods on flat surfaces when the speed of travel and the spacing of goods needs to be controlled. Whatever your unit load or product capacity, Azano design belt conveyors, customised work stations, conveyors with a horizontal incline/decline paths all at predetermined rates to suit your application.**

We supply stand alone units or integrate full conveyor systems as a turnkey project. Custom built to specification and fabricated width and length configurations and fabricated in either painted mild steel or food grade stainless steel conveyor types include;

- Standard belt line
- Flat belt conveyor
- 90° curve rollers
- Customised pack-off work stations
- Modular belts/flat band conveyor
- Grading and sorting conveyor systems
- Chain conveyors
- Pallet dispensers











# GENERAL WEIGHING

- 
- **Batching Systems**
  - **Agricultural Weighing**
  - **Weighing Industries**
  - **Bench Scales**
  - **Remote Displays**
  - **Weighing Platforms**

# BATCHING SYSTEMS



## FORMULA BATCH WEIGHING

A maximum of 200 types of formula and 100 types of raw materials can be pre-registered by switching over from feeding and discharging to allow automatic weighing.

- Process from weighing to discharging of each raw material is automated
- Function of displaying the numbers of raw materials being weighed
- Names for raw materials and formula are displayed in katakana or kanji characters
- Timer control function
- Function of refilling when weight is under fixed quantity (Auto/Manual)
- Function of power cut security
- Weighing status message function

## CONSTANT FEED WEIGHING

Automatic control of discharge and charging. A weighing controller system developed for weight supply and loss-in-weight. Automatic control of weight supply (discharge) and refilling (charging) is performed by calculating flow rate from the measurement of the discharged weight of material inside a hopper.

- Pulse input function
- Accumulated pulse output function PID control function
- Master-slave function (convenient for control of sub-material supply hopper)
- Interlocking function
- Graphic function
- Weighing status message function

## MULTIDRAFT WEIGHING

Powerful when used in heavy weighing work with small weighing scales. Each control function such as a rough feeding, auto switch over and judgment condition can be suitably combined for “speedy” and “low-count yet effective” weighing

- Rough feeding auto switch over (rough charging and SP1/SP2/SP3 are automatically switched over by total).
- Automatic calculation of batch count
- Graphic function
- Compensation weighing function (the ratio of remaining quantity to total final is monitored and Final of each batch is automatically compensated according to the accuracy of the weighing device.)

## BELT SCALES

The weight of raw material can be weighed while being transferred on belt conveyors. Feed rate, total, weight density, load ratio, etc, can be displayed and output by the input of a weight signal sent by the loadcell and the speed signal sent by the speed detector installed under the conveyor. In addition, flow can be controlled by setting the target value.

- Pulse input function
- Accumulated pulse output function
- Zero/span compensation function
- Graphic function
- Moisture content compensation function (water content ratio can be set to compensate the total.)
- Alarm output

---

# AGRICULTURAL WEIGHING

**Our electronic and mechanical livestock scales are ideal for stockyards, private farms, and feedlot weighing. Each scale is designed to accurately measure livestock weight either individually with weight accumulation function or by groups of animals, in a secure, stable environment. The livestock weighing systems come in a variety of platform sizes with capacities ranging from 100kgs - 30T with all surfaces easy to clean and maintain.**



## HOPPER SCALES

Azano tank and hopper scales are ideal for use in any situation where liquid or material portioning, weighing, batching, filling, or processing is essential—including agriculture products, soap, oil, paint, glass, chemical, and mineral plants; wineries and breweries. Customised sizes, shapes, and capacities, each scale offers versatility, accuracy, and dependability.

The popular grain hopper scale can be used in a fixed position or with a truck or monorail installation. From powerful aluminium alloy electronic load cells to durable stainless steel load cells, each model is available in a range of capacities. Azano also offers several hydraulic load cell models that provide accurate weighing in harsh conditions. They are shock-proof, water-proof, and immune to lightning.

Options include heavy duty industrial grade indicators, data logging and remote displays.



## HARVESTER

This cattle weighing unit is ideal for stockyards, feed lots, and private farms. The fully-electronic Harvester livestock scale features patent-pending solid concrete decks and includes livestock pens and two-end swing gates with easy-close latches (arrives factory assembled). The ridged concrete deck provides sure footing for livestock. The 0.8" - 1" high gap between the concrete deck and steel livestock pen allows space for easy washout cleaning and is not visible to cattle from above. The farm scale utilizes 9T model SB stainless steel shear beam load cells which feature superior welded waterproof seals and offers protection against caustic, corrosive environments. Available in 12.5, 25, or 30 ton overall capacities. Sizes up to 9m long x 2m wide.



## PORTABLE LIVESTOCK SCALES

The portable livestock scales are available in stainless steel or mild steel painted. The design features include a panel with wheels for mobility access and folding, easy locking mechanisms for both front and rear doors to ensure stable weighing, no stress to the animal, licensed computer software for both single and accumulative weighing data and RS232 port for signalling.

Weighing capacities from 50kg - 1.5T.

# WEIGHING INDICATORS

**Azano supply and support the Rinstrum range of smart weighing products. Providing a wide range of weighing indicators, remote displays and heavy duty scales, these products are available to suit many applications.**

The R300, 400, 500 and X series of indicators are designed with both the installer and operator in mind and cover a wide range of applications. They are engineered and built to last with reliability being the guiding principle. The modular design allows for the installation to be commissioned with only the components required, saving time and money.

Flexibility is the key with its award winning modular accessory designs. Modules include: additional serial options, input/outputs, analogue outputs, external buttons, ethernet, Alibi (data storage device) and battery or AC option.



## R300 SERIES

- Trade Approved 4,000d @ 0.8 V/d
- Configurable printing
- Built in RS232 comms port
- Clock/Calendar
- Hold, Peak Hold, Totalisation
- Ring Networking
- Blue Tooth Accessory Support



## R400 SERIES

- 100,000d @ 0.25 V/d
- Trade approved Australia, Europe and USA
- IP65 ABS or stainless steel housing
- 16 x 350ohm cells
- Ethernet and Profibus DP support
- Robust precise analogue output module



## R500 SERIES

- 6,000d @ 0.5V/d
- 12 x 350ohm
- Totalising of weights
- Parts Counting
- Checkweighing
- 99 Product tracking
- Configurable printing



## X SERIES

- Waterproof to IP68 and IP69K rating
- 3 band check weighing
- AC, DC and rechargeable NiMH battery options
- Trade Approved 4,000d @ 0.8 V/d
- Built-in RS232 communications port
- Tough enclosure - impact resistant composite alloy housing



# BENCH SCALES

The X Scale Series comprises of stainless steel and powder coated bases that are fitted with a range of indicators from the X320 through to the R420.



**XK X320 IP69K**  
(Marine grade stainless steel scale)

- Trade approved NMI 6/4C/256
- Marine grade (316) stainless steel throughout
- Waterproof to IP68 and IP69K rating
- Heavy washdown applications
- Marine environment
- Check weighing



**XT XS X320**  
(Stainless steel wash-down scale)

- Trade approved NMI 6/4C/256
- Stainless steel (304) frame and pan
- XT - IP68 and IP69K S/S load cell
- XS - IP67 S/S load cell
- X320 Indicator
- Check weighing



**XA R320**  
(General purpose R300 scale)

- Trade approved NMI 6/4C/256
- Mild steel coated frame
- Stainless steel pan/post/stand
- R310, R320 or R420 indicator fitted
- IP65 rated indicator and
- IP67 rated aluminium load cell



**XT XS R420**  
(Stainless steel R420 bench scale)

- Trade approved NMI 6/4C/256
- Stainless steel (304) frame and pan
- XT - IP68 and IP69K S/S load cell
- XS - IP67 S/S load cell
- X320 or R420 indicator
- Dual range 3,000d OIML



**XA R420**  
(General purpose scale R420)

- Trade approved NMI 6/4C/256
- Mild steel coated frame
- Stainless steel pan/post/stand
- R310, R320 or R420 indicator fitted
- IP65 rated indicators
- IP67 rated aluminium load cell
- 10,000d rated indicator

# REMOTE DISPLAYS

Small and large remote displays are available with varying features and accessories. These displays are part of Rinstrum's range of large remotes that are built for industrial applications for both indoors and out.

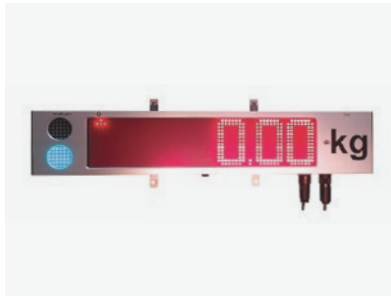


## D320

The basic D320 is a compact six digit remote display making it a cost effective display solution for a variety of applications; including freight / airport scales and mobile feedlot mixers. The flexible mounting options (panel, desk, and wall) allow for fitting into these installations and the LCD display is LED backlit catering for a range of lighting conditions.

### Key Features:

- Bright LED backlighting
- 20mm LCD display
- Tough, compact ABS housing
- Auto-detecting setup
- C-Tick, CE and FCC approved



## D820/D840 SUPER BRIGHT LED ALPHA NUMERIC

The D820 and D840 are super bright LED displays. This is ideal for concrete batching plants or custom site management applications where non-weight related messages like material names need to be displayed.

### Key Features:

- Wide viewing angle
- Annunciators\*
- Isolated RS232/485 Serial Input or Ethernet
- Auto detecting set up
- Compatibility with a wide range of indicator manufacturers
- Unit switching support\*
- AC or 24V DC Power Options



## D730 SUPER BRIGHT LED (75MM/3")

The D730 is a 7 segment super bright LED remote with 75mm (3") high digits and traffic lights. It is an ideal economical display for weigh bridges and truck scales. The D730 is suitable for industrial applications both indoors and out, and features:

### Key Features:

- Super Bright LEDs
- Wide viewing angle 120°
- Suitable for external use
- Isolated RS232/485 Serial Input
- Dedicated red/green traffic lights
- Auto detecting setup
- Compatible with Rinstrum indicators

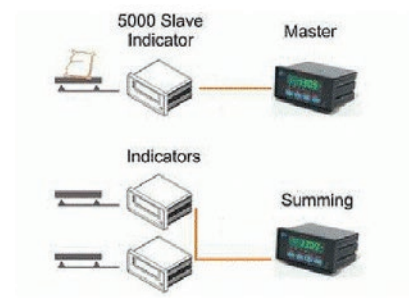


## XD30 DISPLAY WITH IP69K WASHDOWN ENCLOSURE

The XD30 weight indicator is ideal for use in food processing, automotive, chemical and pharmaceutical applications or applications that require reliable operation in harsh environmental conditions. The specially designed enclosure features double O rings to seal to the outer housing.

### Key Features:

- Washdown rating to IP68/69K
- 20mm (0.8in) LCD display
- Bright LED backlighting
- Auto-detecting setup
- C-Tick, CE and FCC approved
- Impact resistant composite alloy housing



## 6700 SERIES SUMMING SMALL DISPLAY

The 6700 may be configured to operate as a:

- Remote display
- Master of a 5000 or
- Summing of several 5000s.

### Key Features:

- Serial summing with 5000 indicators
- Master/slave mode to 5000 indicators
- Unit addressing up to 31 addresses
- Programmable input string
- High contrast LED display

---

# HANGING SCALES + WEIGHING PLATFORMS

Azano has a range of hanging scales and weighing platforms that will suit any application. Both small and large remote displays are available with varying features and accessories. These displays are part of Rinstrum's range of large remotes that are built for industrial applications for both indoors and out.



## HANGING SCALES

The H series hanging scales combine the proven R320 indicator with an S cell in an extended enclosure creating a compact trade approved sling scale. Ideal for a wide range of weighing applications from tea and flour to steel merchants, recycling to competition fishing - any application that requires suspended weighing. Pivoting mount arrangement makes swivelling the assembly and load simple.

### Key Features:

- 300kg (700lb) or 150kg (350lb)
- Trade approved Indicator and Load Cell
- Range of firmware for increased functionality
- Safety rated and positive locked fittings
- Weather resistant housing
- Manual hold standard



## PLATFORM SCALES

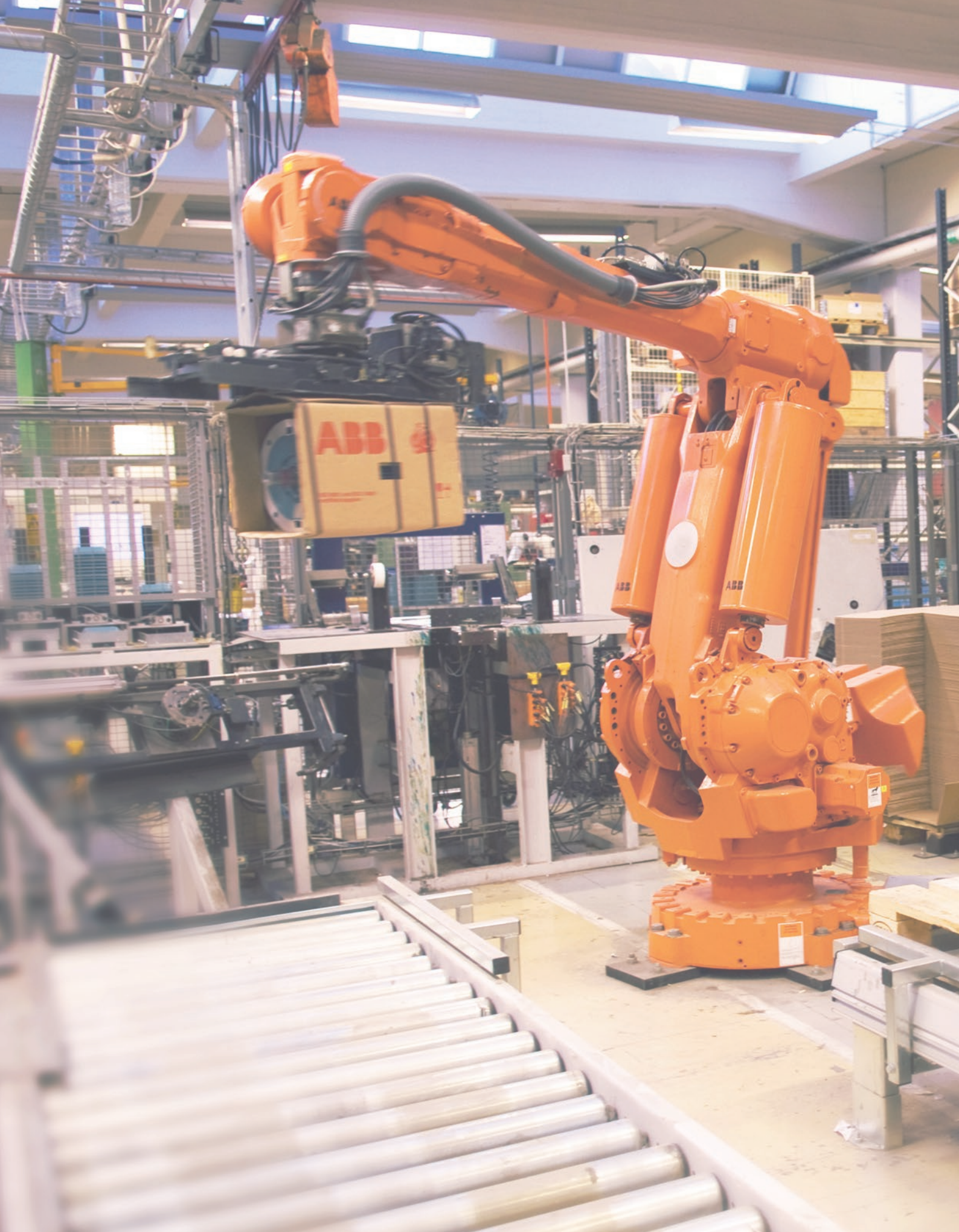
(AZ400)

The AZ400 platform or pallet scales come in mild steel epoxy painted or stainless steel. Steel checker-plate weighing surface is suited for weighing standard sizes pallets or can be used as a general purpose scale. Scales are weight rated from 500kgs to 3T with dimensions from 1m x 1m - 1.5m x 1.5m.

A wide variety of indicators and accessories are available to adapt to the specific weighing application required. Refer to adapt to specific weighing application requirements.

\* Where unit switching, traffic lights and annunciators are supported in the protocol







# ROBOTIC PALLETISING

- 
- Automated Palletising Systems

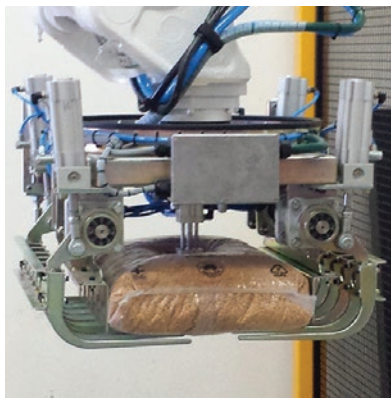
---

# AUTOMATED PALLETISING SYSTEMS

**The introduction of robotic palletising into your production line can eliminate manual handling resulting in significant labour-cost savings and adherence to occupational health and safety regulations while significantly increasing production line efficiency.**

Azano provide robot based automated solutions for palletising, materials handling, and inspection. Design, engineering, manufacturing and testing facilities are available with all systems designed and installed to Australian Standard 2939 "Industrial Robot Systems - Safe Design and Usage".

Inverted mounting, foundry and clean room versions suitable for food processing and pharmaceutical applications are available in some models. Load capacities up to 500kg and pick and place speeds as fast as 2 per second ensures many design variations and operating parameters are available for your production line requirements.



## SERVICES AVAILABLE

- Feasibility studies
- Consulting services
- Concept development
- System design
- Prototyping and testing
- Engineering services
- Robotic system simulations
- Project management
- In-house manufacturing and assembly
- Robot programming
- Robot servicing and maintenance
- Turn-key systems



## STANDARD PRODUCTS

- Robot grippers for cartons, bags and pallets
- Robot bases and pedestals
- Product in-feed conveyors
- Bag flatteners
- Product accumulators
- Out-feed chain or roller conveyors for pallets etc
- Modular safety fencing to Australian Standards
- Light curtain safety systems
- Full production line integration
- Slip sheet applicator
- Pallet placement
- Pallet dispensers
- Shrink wrapping machines









# **PUMPING SOLUTIONS + WATER TREATMENT**

- 
- **Metering Pumps**
  - **Slurry Pumps**
  - **Vertical Pumps**
  - **Mag Drive Pumps**
  - **Food Grade Pumps**
  - **pH Control Systems**
  - **Liquid Chlorination**

---

# PUMPING SOLUTIONS

Azano distribute a diverse range of process pumps. With our expert knowledge, we can help you choose the right equipment to meet your specific requirements in chemical, petrochemical, food and beverage, energy, mining, alkaline and acid plants.



## MOTORISED DOSING PUMPS

Highly effective diaphragm pumps for abrasive liquids with suspended solid particles. Pump heads are stainless steel, PVC and PP.

- Flow rates from 10L - 123L/hr
- 60 - 120 strokes/min
- Single or Double check valve assembly
- Check valve assemblies are designed for easy maintenance and access



## PERISTALTIC METERING PUMPS

Versatile peristaltic pumps, compact and economical. Perfect for small timer packages - pool, wash-ware, dog wash and cooling water applications.

- Adjustable flow rate
- Local isolation switch
- Removable power cable
- Bearing supported shaft
- Liquid level switch option
- Installation kit included



## INSTRUMENTATION

The AG-SELECT controllers are high-tech microprocessor based devices to measure and control one electrochemical parameter among pH value, ORP (Redox, Rx) or Free Chlorine.

AG SELECT B1 (single), B2 (dual) and B3 (triple) are highly flexible and can be configured to measure any configuration of the mentioned parameters, by means of electrochemical sensors.

AG-SELECT DIN Controllers are widely used in light industrial applications like swimming pools, wastewater pH neutralisation and remote water treatment plants (low voltage - solar). They come in panel mount design with range of accessories:

- Plastic or glass electrodes
- Temperature electrodes
- Conductivity sensors
- Free and total chlorine systems
- Hydrogen peroxide sensors

## SOLENOID METERING PUMPS

A wide selection of material options are available to support the E-Series product. This include PP, PVC, PVDF, 316SS and Hastelloy intended for use on a wide range of liquid chemicals, slurries and high viscosity products.



### BT

The workhorse of the E-Series range. The rugged BT suit medium flow/pressure applications.

Flow rates to 80L/hr and pressures to 20 Bar.



### PKX

The compact PKX - great for installations where space is an issue.

Low footprint - compact design

Flow rates to 10L/hr pressure to 6 Bar

Integrated wall/foot mount bracket.



### DLX

The versatile DLX offers flexibility in most industrial applications. From simple manual metering to multi-function proportionate dosage. Optional integral analytical controls such as pH, ORP and Conductivity are also available. Flow rates to 20L/hr and pressures to 10 Bar.

## MAGNETIC DRIVE PUMPS

The applications include Ammonium Nitrate, Ammonium Sulphate, Caustic, Corn Processing - Starch, Hydrochloric Acid, Kaolin Clay, Magnesium Hydroxide, Molten Sulphur, Nitric Acid, Phosphoric Acid, Scrubber and Contaminated Water, Sugar Solutions, Sulphuric Acid, Urea Melt and Waste Fuel.



### MAG DRIVE PUMPS

Magnetically Driven process pumps are of seal-less design that are suitable for corrosive and aggressive liquids which are hazardous to the environment. These magnetic drive pumps are available in centrifugal, turbine, vane type and API.685 designs.

A wide range of materials of constructions are available to suit almost any application.



### API 685 MAG DRIVE

With an extensive range of API pumps that range up to 2500 m<sup>3</sup>/hr and 280m, our process pumps cover all industries using clear, toxic, corrosive, flammable and hot liquids.

---

# WATER QUALITY ANALYSERS

**We supply advanced controllers and analysers for the water treatment market; Water Treatment Plants, Chemicals, Food and Beverage, Portable Water, Cooling Water Desalination Plants, Hospitals, Swimming Pools.**

The high-precision devices identify, quantify and analyse the chemical components using state of the art technologies for colorimetric and amperometric measurements of water. They measure parameters such as chlorine, pH, redox, turbidity, conductivity and temperature.



**HG - 602**  
(Water quality analyser)

A simple and user-friendly Amperometric, Free Chlorine residual analyser that is an immediate success with operators who recognize the need for easy to use, water analysis. The HG-602 adapts to each sites unique needs by allowing any combination of measurements in a single system including: Free Cl (Amperometric), pH, Temperature, Turbidity, Conductivity and Flow. A complete, flexible solution to any application.



**HG - 702 COLORIMETRIC**  
(Water quality analyser)

Blue i innovative designs include the HG-702, the one analyser that will handle all your water analysis needs. With interchangeable sensors and a flexible, easy to use design, the colorimetric HG-702 provides the optimal solution for water quality. Extremely accurate, the HG-702 functions well in difficult water conditions such as: sewage water, sea water, and water of high turbidity. The entire system, including electrodes, is protected against random water shut-off and automatically resumes operation without delay.



# PROCESS PUMPS



## MODEL A7

Our range of Hydrodynamic Centrifugal pumps provides a dry seal arrangement with zero leakage without the need for costly mechanical seals, packings or lip seals and their associated seal water systems.

The applications include Ammonium Nitrate, Ammonium Sulphate, Caustic, Corn Processing - Starch, Hydrochloric Acid, Kaolin Clay, Magnesium Hydroxide, Molten Sulphur, Nitric Acid, Phosphoric Acid, Scrubber and Contaminated Water, Sugar Solutions, Sulphuric Acid, Urea Melt and Waste Fuel.



## API

An extensive range of API pumps that range up to 2500 M<sup>3</sup>/hr and 280m head our range of process pumps cover all industries using clear, toxic, corrosive, flammable and hot liquids.



## PLASTIC CHEMICAL RESISTANT TRANSFER PUMPS

Our range of engineered plastic horizontal and vertical mounted sump pumps are designed and constructed to handle corrosive and aggressive liquids that are not suited for contact with metal components.



## FOOD GRADE PUMPS

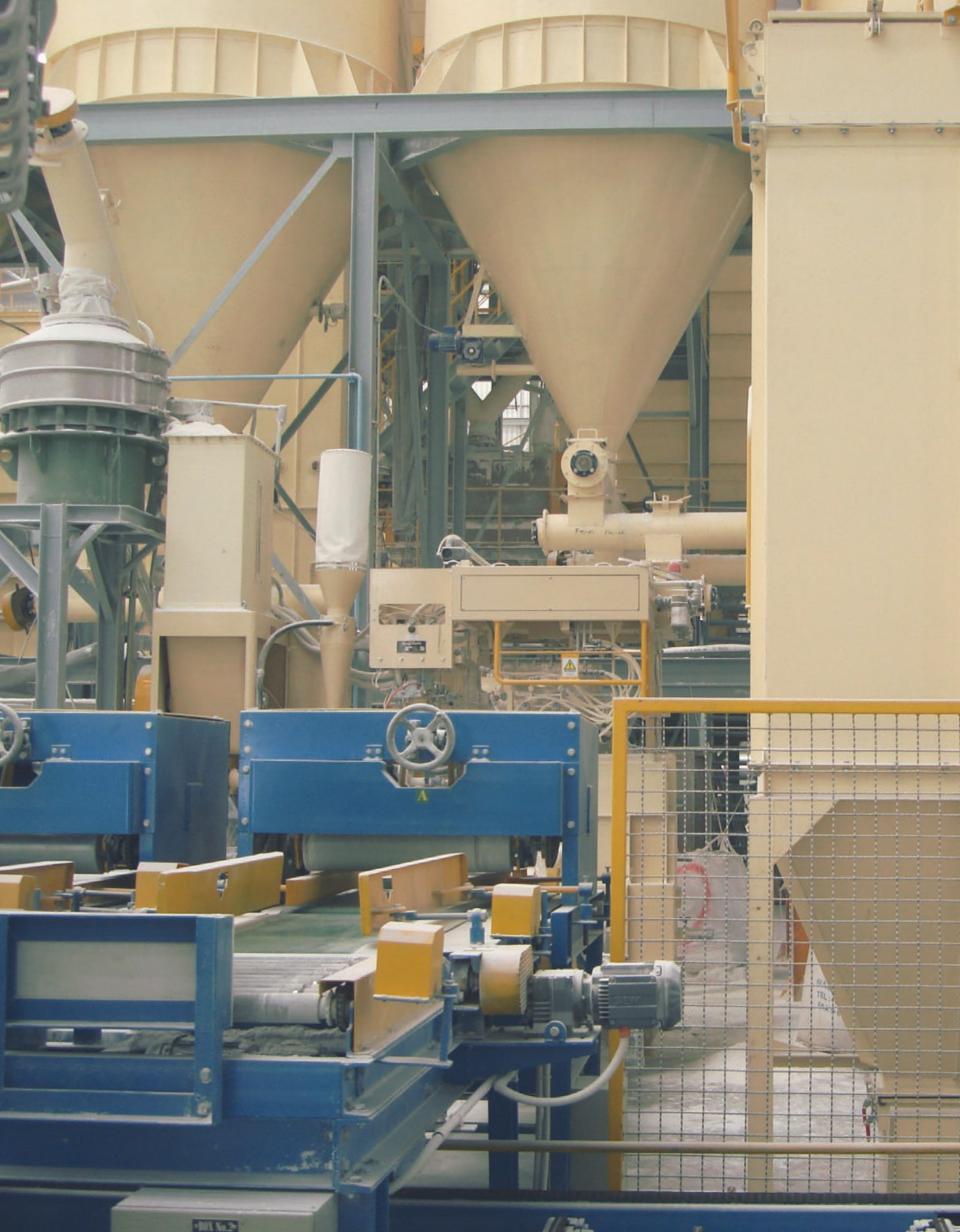
Manufactured in 316 Stainless Steel, the pump sets the standard for uptime reliability and CIP performance. Unique front-loading product seal positioning, gives faster maintenance, easier cleaning and less downtime. By removing only the front cover, the pump can be fully accessed from the front of the pump without disconnecting the process line.



## METERING GEAR PUMPS

Our range of metering gear pumps use small clearances between gears and the housing to accurately meter fluids in a pulseless action.

A variety of pump designs enable a wide range of capacities, viscosities, temperatures and pressures associated with general, abrasive and poor lubricating liquids while maintaining precise and repeatable flow control.



# DRY MATERIAL HANDLING

- 
- Bulk Batching
  - Liquid Handling
  - Pneumatic Delivery



---

# DRY MATERIAL HANDLING SYSTEMS

Dry material handling systems are designed and manufactured for durability of service and long term dependability in feeding with consistent accuracy. Our volumetric and gravimetric systems are successfully used in feeding dry materials in many forms - powder, granules, pellets, chips, chunks and flakes.



## POWDER HANDLING EQUIPMENT

Handling powders can often be frustrating and difficult. AZANO have the right solutions for free flowing and difficult to handle powders.

Design options can include:

- Pneumatic conveying
- Flexible augers
- Rotary valves



## SCREW CONVEYORS AND FEEDERS

AZANO provide a wide variety of screw conveyors and feeders from small to large applications:

- Mild steel
- Stainless steel
- Food grade applications



---

# BULK BATCHING SYSTEMS

**Our customised bulk batching systems are developed while maintaining efficiency, reliability, performance that deliver accuracy with optional interfacing, data management with a multitude of formulation designs. With over 25 years experience in a variety of products, our designs and equipment provide the customer with solid returns.**

## **We offer specialised designs:**

- Batch blenders
- Continuous blenders
- Pneumatic delivery systems
- Bucket elevators
- Vertical belt conveying



The bulk batching systems offer standard and customised formulation management. Each formulation provides multi-ingredient selection with weight or percentage valuations.

## Features include:

- Plant controls
- Multiple displays
- PLC interface
- Data management
- Customer database interfacing
- Batching Reports

NOTES

NOTES





**1800 006 901**

**[www.azano.com.au](http://www.azano.com.au)**

**[sales@azano.com.au](mailto:sales@azano.com.au)**

**WESTERN AUSTRALIA**

Level 6, 218 St Georges Terrace  
Perth WA 6000

**VICTORIA**

Unit 19, 45 Normanby Road  
Notting Hill 3168 VIC